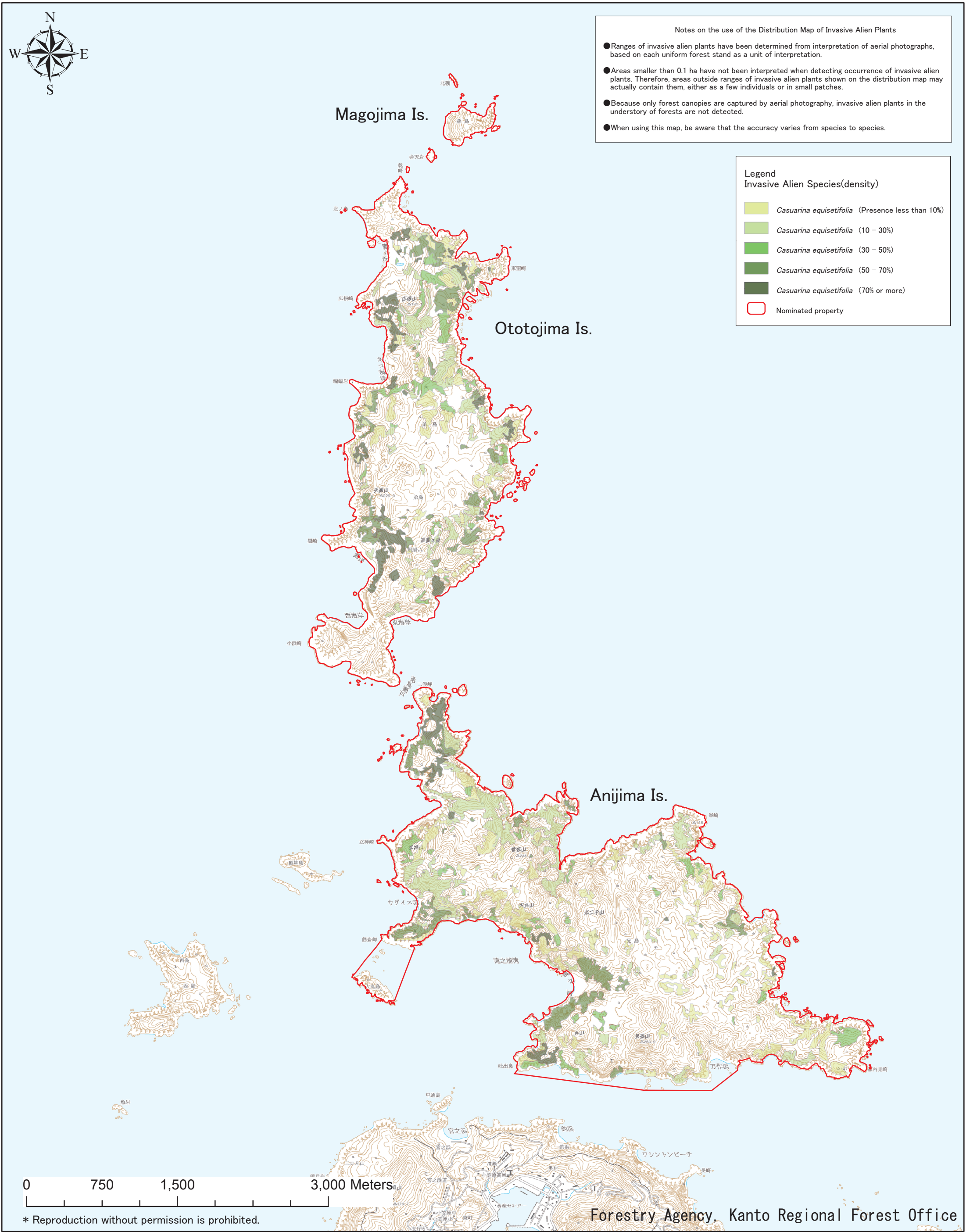


Fig. 3-2 Distribution Map of Invasive Alien Plants on the Ogasawara Islands
Anijima Island Ototojima Island Magojima Island



This Distribution Map of Invasive Alien Plants was produced as an output from the Project for the Survey on Distribution of Invasive Alien Plants on the Ogasawara Islands in fiscal 2009 (Forestry Agency). The map image in the background of this Distribution Map was taken from GISMAP 25000R+ published by Hokkaido-Chizu Co., Ltd., which was produced from 1:25,000 topographic maps of Geospatial Information Authority of Japan with permission of Director General of the Authority (permission No. 185-25665 for business use in 2009). The Distribution Map was prepared by superimposing the GIS data for national forests and the GIS data depicting the ranges of invasive alien plants prepared from the analysis of aerial photographs taken in the period from November 2008 to January 2009 on the map image.